



# FGF-13 Polyclonal Antibody

<b>Catalog No</b>	YP-Ab-15907
<b>Isotype</b>	IgG
<b>Reactivity</b>	Human;Mouse;Rat
<b>Applications</b>	WB;ELISA
<b>Gene Name</b>	FGF13
<b>Protein Name</b>	Fibroblast growth factor 13
<b>Immunogen</b>	The antiserum was produced against synthesized peptide derived from human FGF13. AA range:154-203
<b>Specificity</b>	FGF-13 Polyclonal Antibody detects endogenous levels of FGF-13 protein.
<b>Formulation</b>	Liquid in PBS containing 50% glycerol, 0.5% BSA and 0.02% sodium azide.
<b>Source</b>	Polyclonal, Rabbit,IgG
<b>Purification</b>	The antibody was affinity-purified from rabbit antiserum by affinity-chromatography using epitope-specific immunogen.
<b>Dilution</b>	Western Blot: 1/500 - 1/2000. ELISA: 1/5000. Not yet tested in other applications.
<b>Concentration</b>	1 mg/ml
<b>Purity</b>	≥90%
<b>Storage Stability</b>	-20°C/1 year
<b>Synonyms</b>	FGF13; FHF2; Fibroblast growth factor 13; FGF-13; Fibroblast growth factor homologous factor 2; FHF-2
<b>Observed Band</b>	28kD
<b>Cell Pathway</b>	[Isoform 1]: Nucleus .; [Isoform 2]: Cytoplasm . Nucleus .; [Isoform 3]: Cytoplasm . Nucleus .; [Isoform 4]: Cytoplasm . Nucleus .; [Isoform 5]: Cytoplasm . Nucleus .; Cell projection, filopodium . Cell projection, growth cone . Cell projection, dendrite . Cell membrane, sarcolemma . Cytoplasm . Not secreted. Localizes to the lateral membrane and intercalated disks of myocytes. .
<b>Tissue Specificity</b>	Ubiquitously expressed. Predominantly expressed in the nervous system.
<b>Function</b>	function:Probably involved in nervous system development and function.,similarity:Belongs to the heparin-binding growth factors family.,tissue specificity:Nervous system.,
<b>Background</b>	The protein encoded by this gene is a member of the fibroblast growth factor (FGF) family. FGF family members possess broad mitogenic and cell survival activities, and are involved in a variety of biological processes, including embryonic development, cell growth, morphogenesis, tissue repair, tumor growth, and invasion. This gene is located in a region on chromosome X, which is associated with Borjeson-Forssman-Lehmann syndrome (BFLS), making it a possible candidate gene for familial cases of the BFLS, and for other syndromal



and nonspecific forms of X-linked mental retardation mapping to this region. Alternative splicing of this gene at the 5' end results in several transcript variants encoding different isoforms with different N-termini. [provided by RefSeq, Nov 2008],

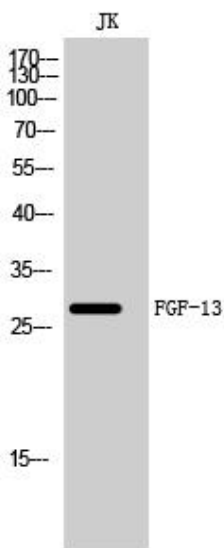
**matters needing attention**

Avoid repeated freezing and thawing!

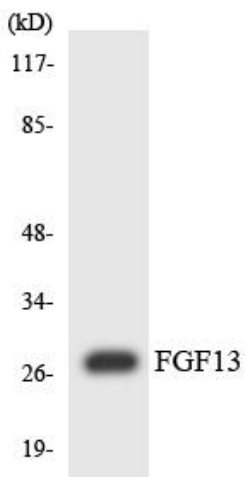
**Usage suggestions**

This product can be used in immunological reaction related experiments. For more information, please consult technical personnel.

**Products Images**



Western Blot analysis of JK cells using FGF-13 Polyclonal Antibody diluted at 1:500



Western blot analysis of the lysates from Jurkat cells using FGF13 antibody.